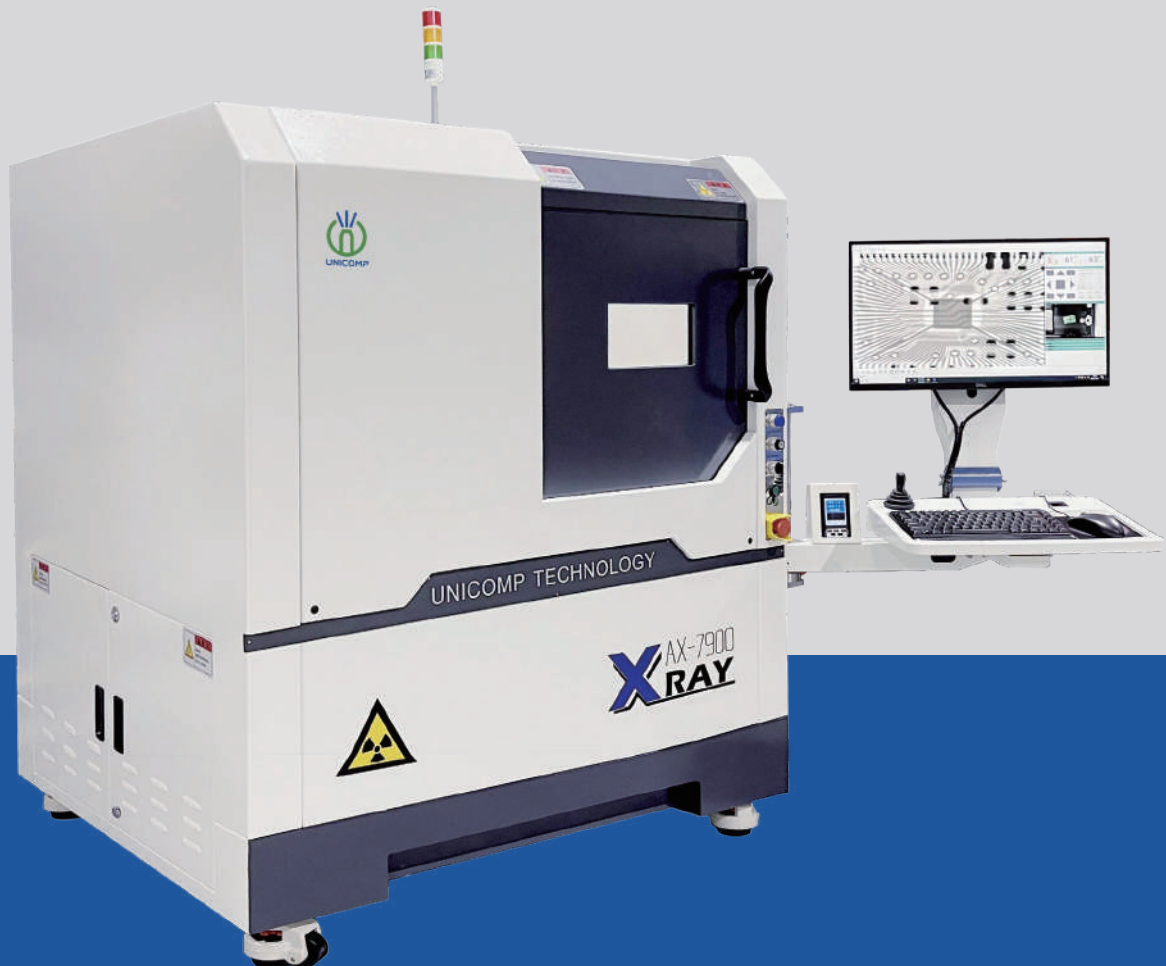




Industria CT & X-Ray Inspection
Solutions Provider

AX7900

X-Ray Inspection Equipment

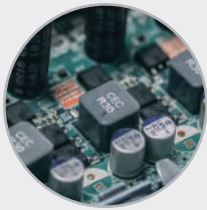


AX7900

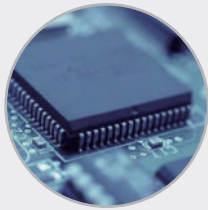


Widely applied for BGA, CSP, Flip Chip, LED, Fuse, Diode, PCB, Semiconductor, Battery Industry, Small Metal Casting, Electronic Connector Module, Cables, Aerospace Components, Photovoltaic Industry, etc.

Application Fields



SMT/PCBA Inspection



Semiconductor Inspection



Lithium Batteries Inspection



LED Inspection

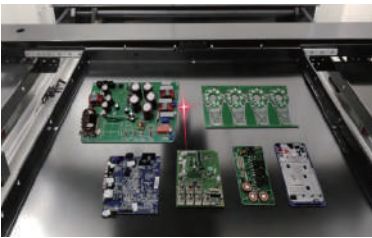


Photovoltaic Inspection

Functions and Features

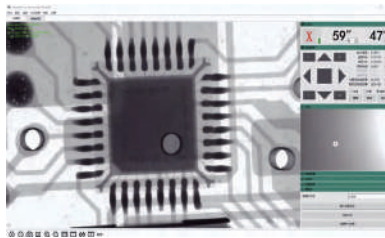
1

Large Size Inspection Table
Laser Pinpoint For Precise Location



2

Accurate Control, CNC Programming
Automatic Positioning



3

FPD Tilting $\pm 25^\circ$



4

Safely Electromagnetic Interlock



5

Fingerprint Access Management
System

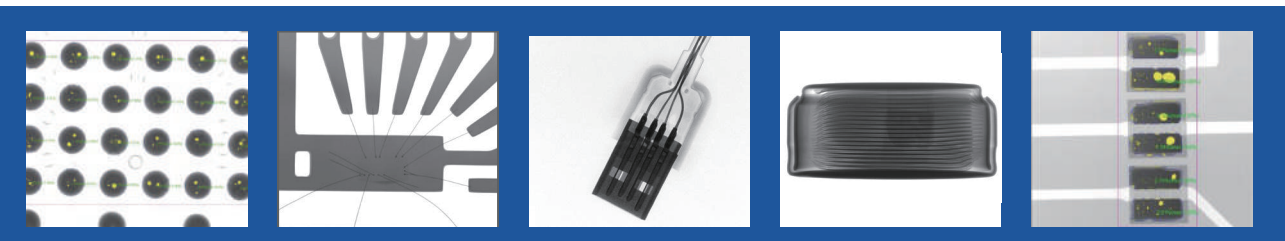


6

Real-time Monitoring of Radiation



Inspection Images



Technical Parameters and Specifications

System Summary

Footprint	1280(W)×1220(D)×1615(H)mm	Plywood Packing Size	1800(W)×1400(D)×1800(H)mm
Machine Weight	1100 kg	Packing Weight	1250 kg
Power Supply	AC 110/220V, 50/60Hz	Power Consumption	1.0 kW

X-Ray Tube

Tube Type	Sealed	Max. Power	8W
Voltage	0~90kV (Adjustable)	Focus Spot Size	5μm

Imaging Detector

Detector	Flat Panel Detector (FPD)	Pixel Size	84μm
Effective Detection Area	129*129mm	Frame Rates	Max30Hz
Pixel Matrix	1536*1536[pixel]	System Magnification	600X

Software

Auto-measuring	BGA Soldering Voids Auto-measuring and Support Data/Graphic Output
Multiple Measuring Tools	Support Measuring Distance, Angle, Diameter, Polygon, PTH filling rate, etc.
CNC Mode	CNC Programmable Inspection, Easy Operation and User Friendly
Real-time Display	Real-time Displaying the Working Data of Voltage, Current, Angle, Date, etc.
Navigation	Convenient Target Point Positioning System

Motion Control System

Movement Control	Joystick, Keypad & Mouse
Max. Loading Area/Weight	520*420mm
Max. Inspection Area	460*400mm
Tilting Angle	±25°
Manipulator	5-axis with X / Y / Z1 / Z2 / T

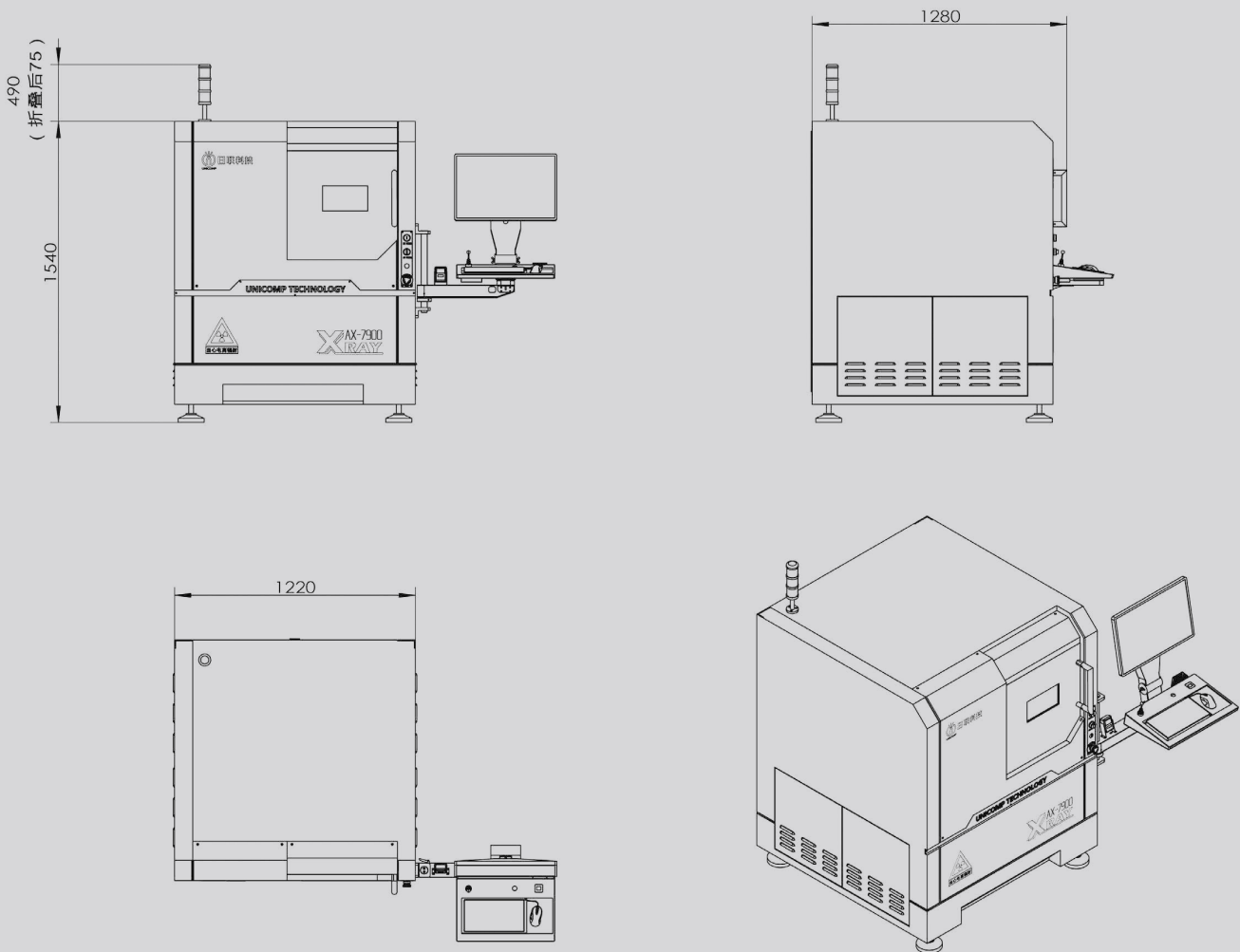
Industrial PC

Monitor	24" FHD LCD Display
System OS	Windows 10 64bit
Hard disk	1TB
RAM	16GB
CPU model	Intel i7 Processor

Other Features

Energy Saving	X-Ray Auto-off when it's out of work over than 5 minutes	X-Ray Safety	<1μSv/h (Meets All International Standards)
Authority Management	Fingerprin Access Management System, an Suppor Password Accessing.	Safety Operation	Electromagnetic Interlock, Warning Light and Real-time Radiation Leakage Monitor

Dimensions and Appearance



UNICOMP TECHNOLOGY CORPORATE:

Wuxi Unicomp Technology Co., Ltd (HQ)

No. 11, Lijiang Road, Xinwu District, Wuxi City, Jiangsu Province, P.R.C. Zip Code: 214112 TEL: +86-510-68506688 FAX: +86-510-81816018

Shenzhen Unicomp Technology Co., Ltd

Building 2A, Baoxin Technology Park, Guangyuan 5th Road, Guangming District, Shenzhen, Guangdong Province P.R.C. Zip: 518107
TEL: +86-755-26650316 FAX: +86-755-26650296

Chongqing Unicomp Technology Co., Ltd

1st Building, No.23 Fushun Blvd, Biquan Street, Bishan District, Chongqing, P.R.C.
Zip Code: 402760
TEL: +86-23-63226131 FAX: +86-23-63228366

Europe Unicomp Technology Kft.

1122 Budapest, Maros utca 12, Hungary

RAY TECH (MALAYSIA) SDN.BHD.

No.2, Jalan SILC 4/1, Kawasan Perindustrian SILC, 79200, Iskandar Puteri, Johor, Malaysia.